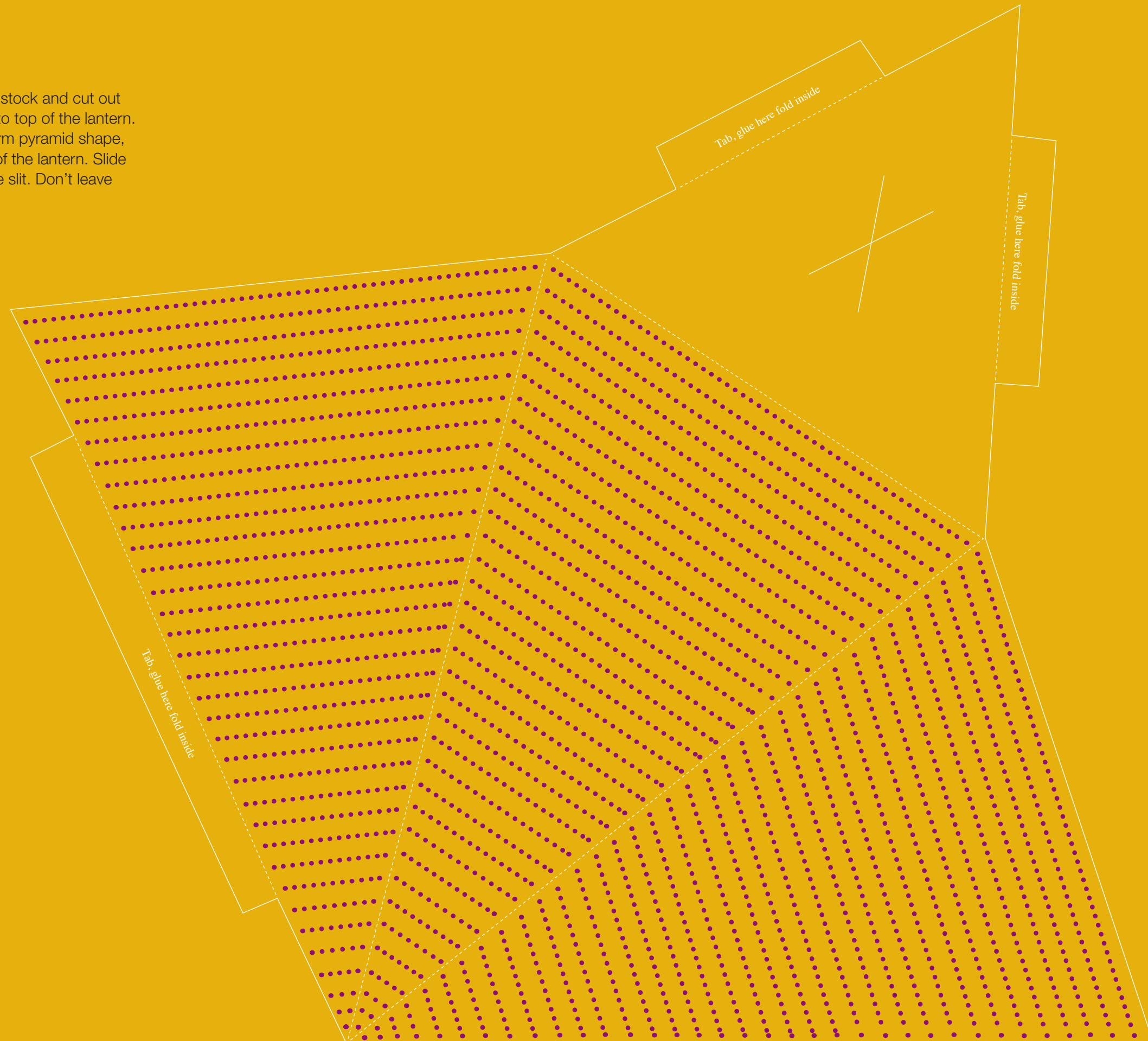


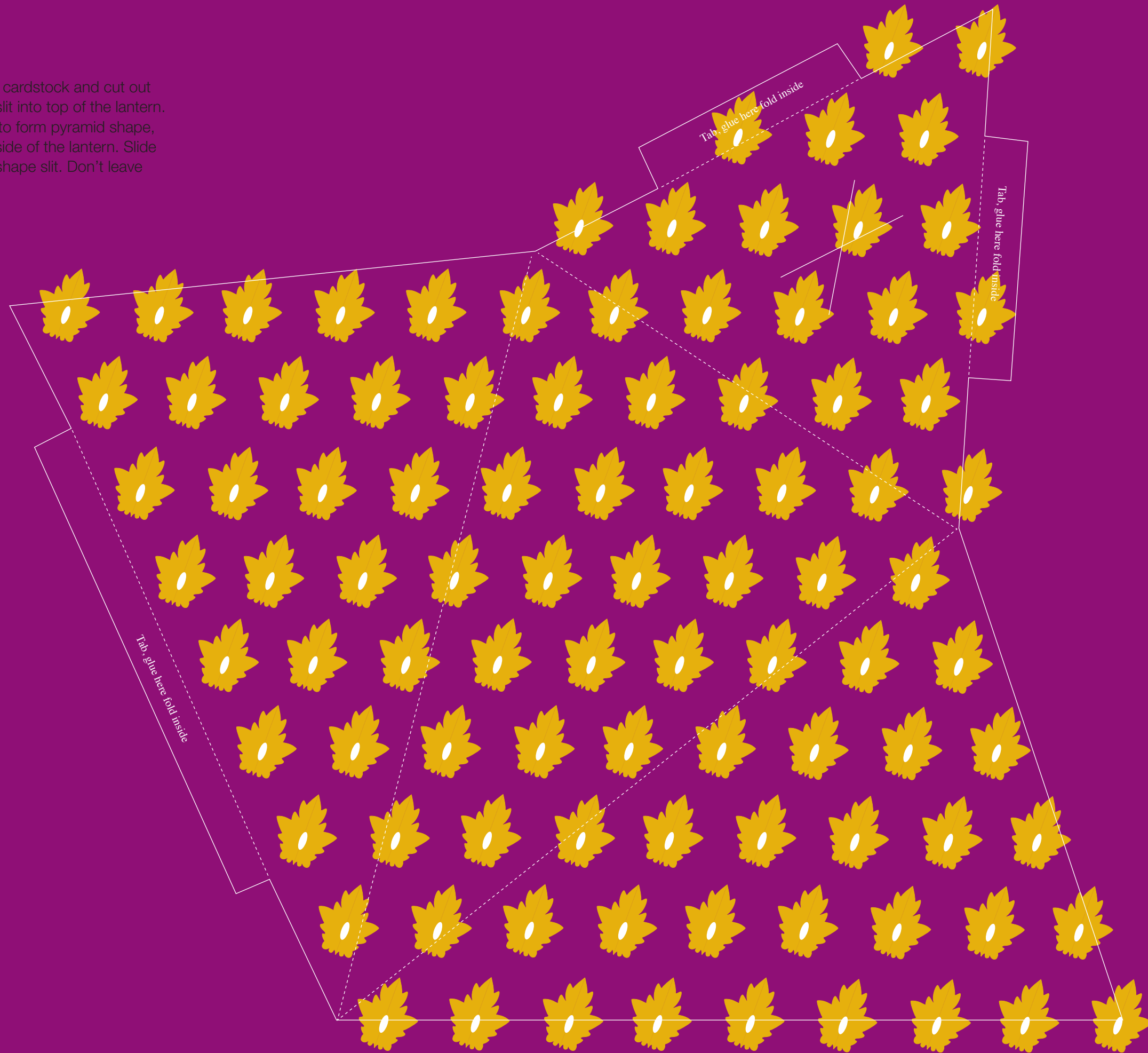
Lantern Shades

Print at 100% onto 11x17-inch cardstock and cut out along solid lines. Cut X-shape slit into top of the lantern. Fold along all the dashed lines to form pyramid shape, affixing tabs with glue to the inside of the lantern. Slide bistro light bulb through the X-shape slit. Don't leave unattended when lights are on.



Lantern Shades

Print at 100% onto 11x17-inch cardstock and cut out along solid lines. Cut X-shape slit into top of the lantern. Fold along all the dashed lines to form pyramid shape, affixing tabs with glue to the inside of the lantern. Slide bistro light bulb through the X-shape slit. Don't leave unattended when lights are on.



Lantern Shades

Print at 100% onto 11x17-inch cardstock and cut out along solid lines. Cut X-shape slit into top of the lantern. Fold along all the dashed lines to form pyramid shape, affixing tabs with glue to the inside of the lantern. Slide bistro light bulb through the X-shape slit. Don't leave unattended when lights are on.

